

Madison, Wisconsin

INDEX OF SHEETS

SHEET NO.	TITLE
1	SANITARY ACCESS STRUCTURE
2 - 13	LINING PLANS

# CITY OF MADISON

## CITY ENGINEERING DIVISION

### DEPARTMENT OF PUBLIC WORKS

## PLAN OF PROPOSED IMPROVEMENT

PUBLIC IMPROVEMENT PROJECT APPROVED

JANUARY 16, 2018

BY THE COMMON COUNCIL OF MADISON, WISCONSIN

PUBLIC IMPROVEMENT DESIGN APPROVED BY:

*[Signature]* 8/9/18  
City Engineer Date

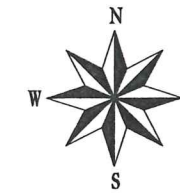
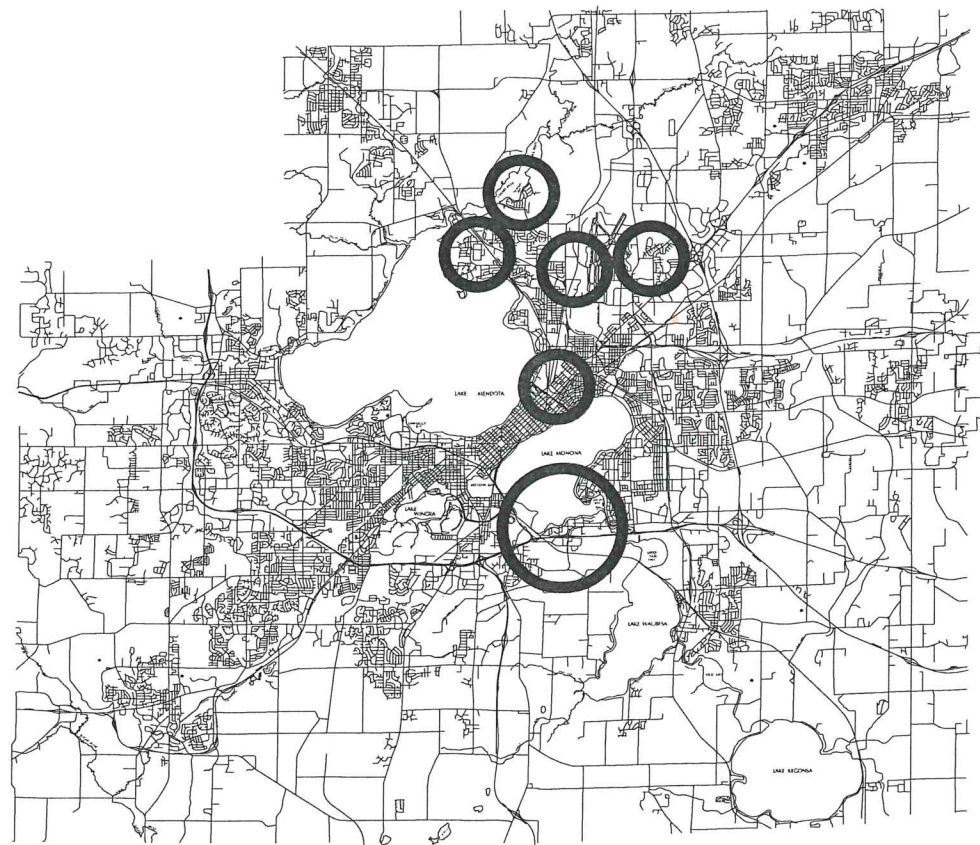
SANITARY SEWER DESIGNED BY:



### SANITARY SEWER ACCESS STRUCTURE LINING - 2018

CITY PROJECT NO. 11827  
CITY CONTRACT NO. 8255

#### MANHOLE RELINING PROJECT AREA



SHEET NO.	STRUCTURE	ADDRESS	LOCATION	SIZE	DEPTH	CONDITION
2	5541-004	FORDEM AVE., 1700 BLK	DRIVEWAY	4R	10	
2	5541-003	FORDEM AVE., 1700 BLK	TERRACE	6X6	10.8	
3	6423-011	OLD GATE & SAGE CIRCLE	STREET	4R	13.1	
3	6423-013	OLD GATE & BASIL CIRCLE	STREET	4R	12.9	
4	4823-003	MURPHY/TROY	EASEMENT	4R	5	
4	4823-004	MURPHY/TROY	EASEMENT	4R	10.3	
4	4823-005	MURPHY/TROY	EASEMENT	5R	14.2	
4	4923-004	MURPHY/TROY	EASEMENT	4R	15.2	
5	5959-002	WAUNONA WAY, 1616	BACKYARD	4R	6.3	
5	5959-001	WAUNONA WAY, 1628	BACKYARD	4R	7.7	
5	5859-010	WAUNONA WAY, 1708	BACKYARD	4R	7.5	
5	5859-006	WAUNONA WAY, 1910	BACKYARD	4R	6.2	To be raised by City
5	5859-004	WAUNONA WAY, 2006	FRONTYARD	4R	7.9	Infiltration
5	5859-003	WAUNONA WAY	EASEMENT	4R	8.7	
6	5759-003	WAUNONA WAY, 2124	BACKYARD	4R	6.5	
6	5759-002	WAUNONA WAY, 2220	BACKYARD	4R	8	
6	5759-001	WAUNONA WAY, 2500	BACKYARD	4R	7.6	
7	5660-006	WAUNONA WAY, 2622	BACKYARD	4R	6.4	
7	5660-005	WAUNONA WAY, 2628	BACKYARD	4R	6.8	
7	5660-004	WAUNONA WAY, 2704	BACKYARD	4R	4	Infiltration
7	5660-014	WOODLEY LN, DEAD END	STREET	5R	7.8	
7	5660-002	ESTHER BEACH	EASEMENT	4R	6	To be raised by City
7	5660-001	WAUNONA WAY, 2810	BACKYARD	4R	6.8	
7	5560-009	WAUNONA WAY, 2810	BACKYARD	4R	8.6	
7	5560-008	WAUNONA WAY, 2812	BACKYARD	4R	10.4	
8	5560-005	WAUNONA WAY, 2822	BACKYARD	4R	4.9	Infiltration
8	5560-004	WAUNONA WAY, 2830	BACKYARD	4R	10	Under stone walkway
8	5560-003	WAUNONA WAY, 2900	FRONTYARD	4R	8.7	
8	5560-002	WAUNONA WAY, 2908	FRONTYARD	4R	12	
8	5560-001	WAUNONA WAY, 2918	FRONTYARD	4R	9.7	
8	5561-002	WAUNONA WAY, 3008	BACKYARD	4R	6.7	
8	5561-001	WAUNONA WAY, 3010	BACKYARD	4R	4	
8	5461-002	WAUNONA WAY, 3024	BACKYARD	4R	5.9	
8	5461-001	WAUNONA WAY, 3036	BACKYARD	4R	14.3	
8	5462-003	WAUNONA WAY, 3048	BACKYARD	4R	8.7	
8	5462-004	WAUNONA WAY, 3216	BACKYARD	4R	10	Infiltration
9	6227-001	WRIGHT & PIERSTORFF	EASEMENT	4R	8	
9	6227-002	WRIGHT ST.	EASEMENT	4R	8.3	
9	6227-003	WRIGHT ST.	EASEMENT	4R	9	
9	6227-004	WRIGHT ST.	EASEMENT	4R	8.5	Infiltration
9	6227-005	WRIGHT ST.	EASEMENT	4R	7	Infiltration
10	6128-009	WRIGHT ST.	EASEMENT	4R	9.5	
10	6128-010	WRIGHT ST., 3402	EASEMENT	4R	9.9	
10	6128-011	WRIGHT ST., 3402	EASEMENT	4R	11.9	
10	6129-006	KINSMAN/WRIGHT ST.	STREET	4R	10.1	
11	6129-007	WRIGHT ST., 1902	PARKING LOT	4R	13	Infiltration
11	6129-008	WRIGHT ST., 1802	EASEMENT	4R	10.6	Infiltration
11	6129-010	WRIGHT ST., 1802	DRIVEWAY	4R	10.4	
11	6130-009	WRIGHT ST., 1802	EASEMENT	4R	11.9	
12	6130-008	WRIGHT ST., 1702	EASEMENT	4R	12.4	Infiltration
12	6130-007	WRIGHT ST., 1702	EASEMENT	4R	9.9	Infiltration
12	6130-006	WRIGHT ST., 1702	EASEMENT	4R	10	Infiltration
12	6131-007	ANDERSON & WRIGHT	EASEMENT	4R	9	
13	5416-002	COMANCHE GLEN	EASEMENT	4R	15	Infiltration

PLOT SCALE:

PLOT NAME:

REV. DATE:

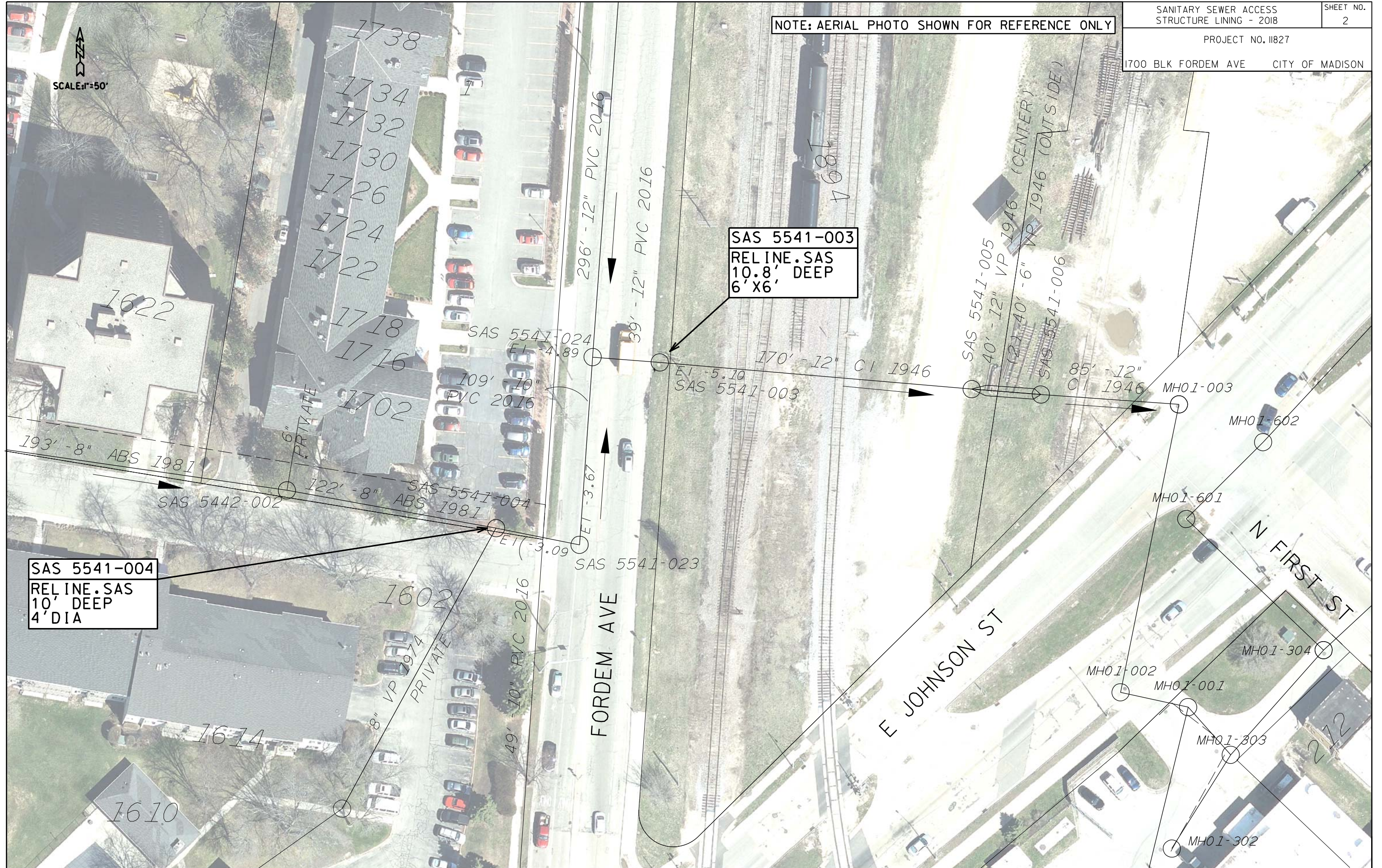
ORIGINATOR: CITY OF MADISON, STREETS DIVISION

FILE NAME:

DATE: 8/7/2018

NOTE: AERIAL PHOTO SHOWN FOR REFERENCE ONLY

SCALE: 1"=50'



**SAS 5541-003**  
 RELINE .SAS  
 10.8' DEEP  
 6' X 6'

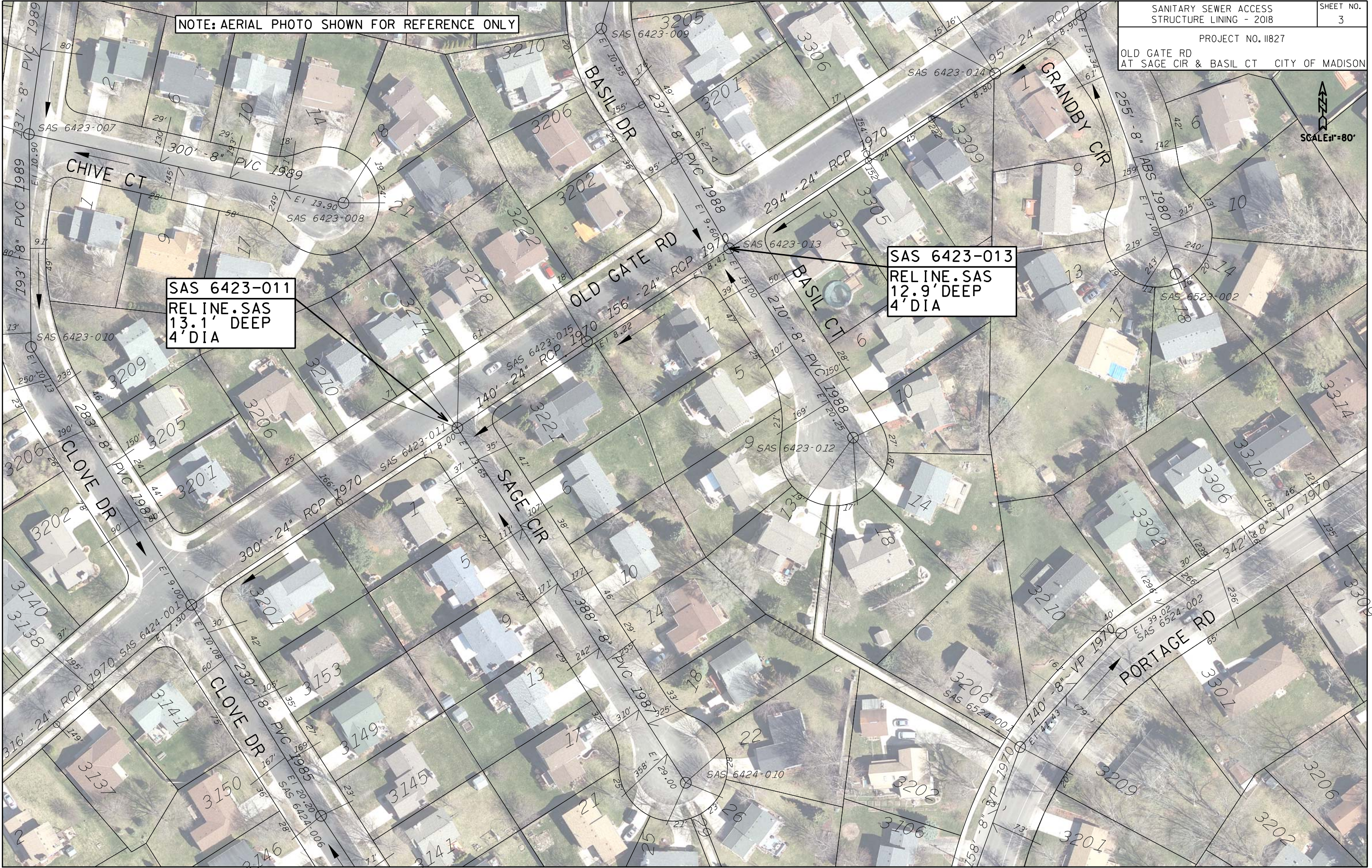
**SAS 5541-004**  
 RELINE .SAS  
 10' DEEP  
 4' DIA

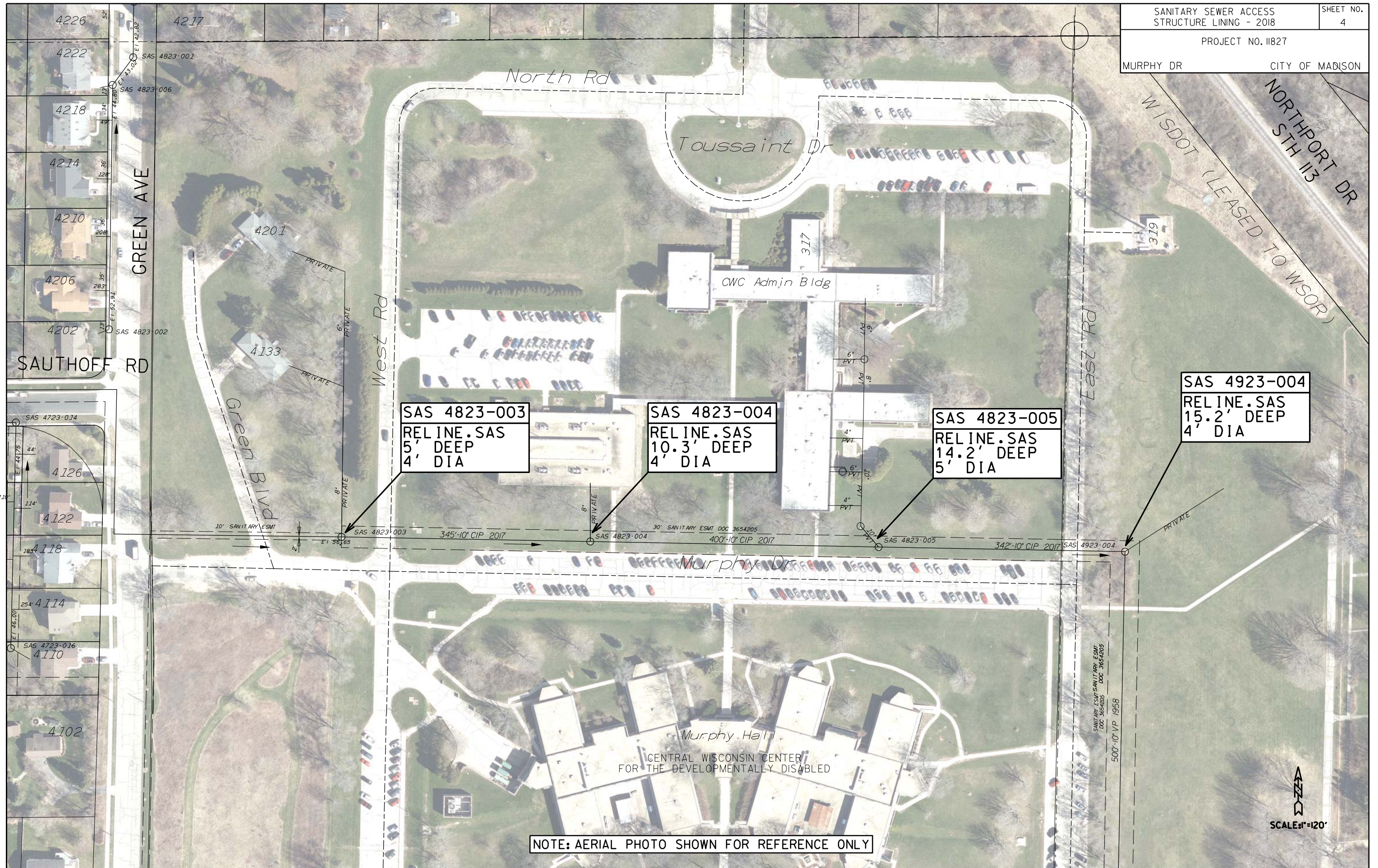
NOTE: AERIAL PHOTO SHOWN FOR REFERENCE ONLY



SAS 6423-011  
RELINE .SAS  
13.1' DEEP  
4' DIA

SAS 6423-013  
RELINE .SAS  
12.9' DEEP  
4' DIA





**SAS 4823-003**  
 RELINE.SAS  
 5' DEEP  
 4' DIA

**SAS 4823-004**  
 RELINE.SAS  
 10.3' DEEP  
 4' DIA

**SAS 4823-005**  
 RELINE.SAS  
 14.2' DEEP  
 5' DIA

**SAS 4923-004**  
 RELINE.SAS  
 15.2' DEEP  
 4' DIA

Murphy Hall  
 CENTRAL WISCONSIN CENTER  
 FOR THE DEVELOPMENTALLY DISABLED

NOTE: AERIAL PHOTO SHOWN FOR REFERENCE ONLY



NOTE: AERIAL PHOTO SHOWN FOR REFERENCE ONLY

SAS 5859-003  
REL INE.SAS  
8.7' DEEP  
4'DIA

SAS 5859-004  
REL INE.SAS  
7.9' DEEP  
4'DIA  
INFILTRATION

SAS 5859-006  
REL INE.SAS  
6.2' DEEP  
4'DIA  
TO BE RAISED  
BY CITY

SAS 5859-010  
REL INE.SAS

SAS 5959-001  
REL INE.SAS  
7.7' DEEP  
4'DIA

SAS 5959-002  
REL INE.SAS  
6.3' DEEP  
4'DIA

LAKE MONONA

CITY of MADISON  
HOBOKEN LIFT STATION  
L.S.# 17  
1812 WAUNONA WAY \*SEWR



NOTE: AERIAL PHOTO SHOWN FOR REFERENCE ONLY



SAS 5759-001  
REL INE.SAS  
7.6' DEEP  
4' DIA

SAS 5759-002  
REL INE.SAS  
8' DEEP  
4' DIA

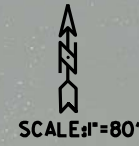
SAS 5759-003  
REL INE.SAS  
6.5' DEEP  
4' DIA

LAKE MONONA

CITY of MADISON  
FAYETTE LIFT STATION  
L.S.# 18  
5201 FAYETTE AVE



NOTE: AERIAL PHOTO SHOWN FOR REFERENCE ONLY



LAKE MONONA

SAS 5560-008  
REL INE.SAS  
10.4' DEEP  
4' DIA

SAS 5660-001  
REL INE.SAS  
6.8' DEEP  
4' DIA

SAS 5560-009  
REL INE.SAS  
8.6' DEEP  
4' DIA

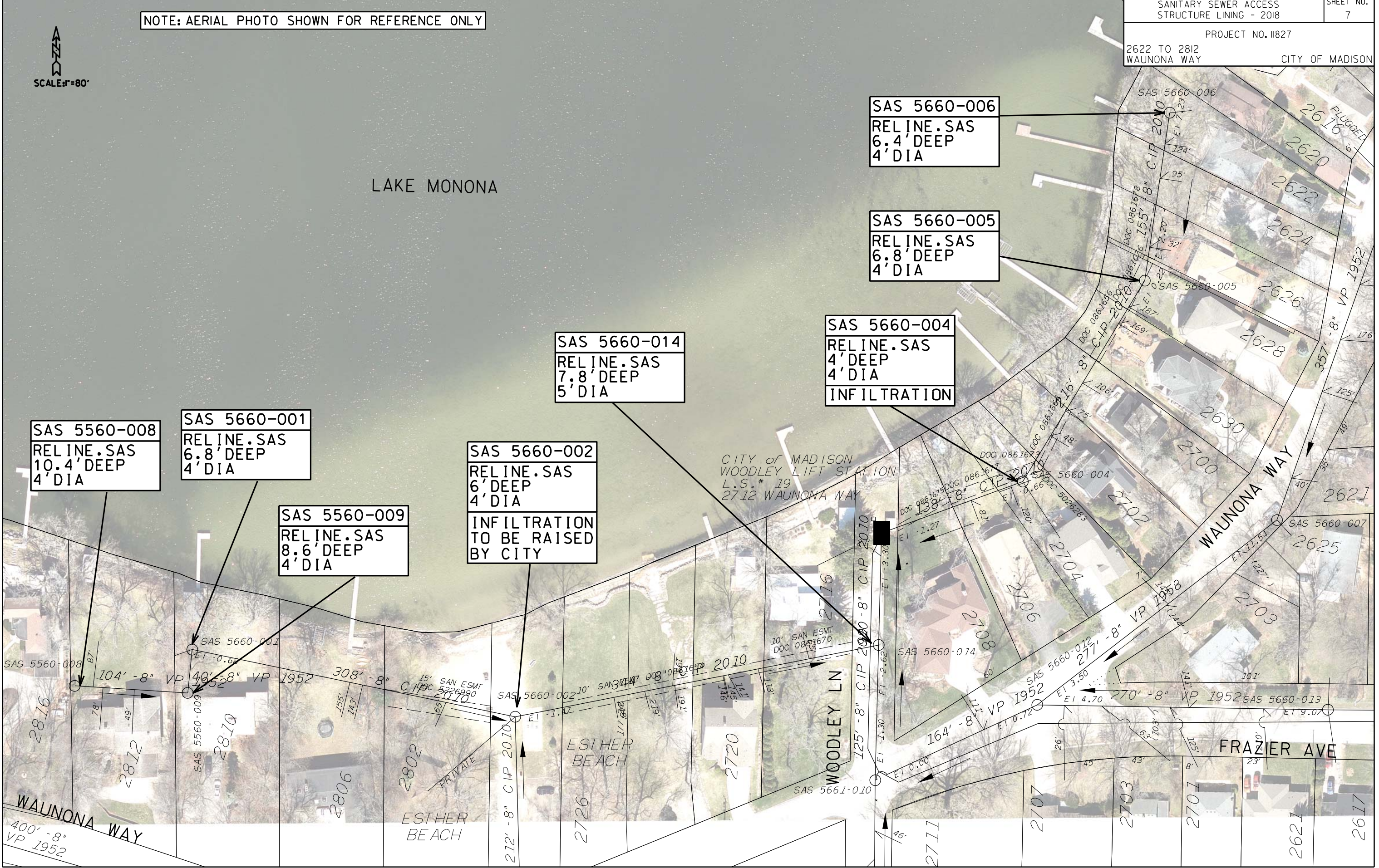
SAS 5660-002  
REL INE.SAS  
6' DEEP  
4' DIA  
INFILTRATION  
TO BE RAISED  
BY CITY

SAS 5660-014  
REL INE.SAS  
7.8' DEEP  
5' DIA

SAS 5660-004  
REL INE.SAS  
4' DEEP  
4' DIA  
INFILTRATION

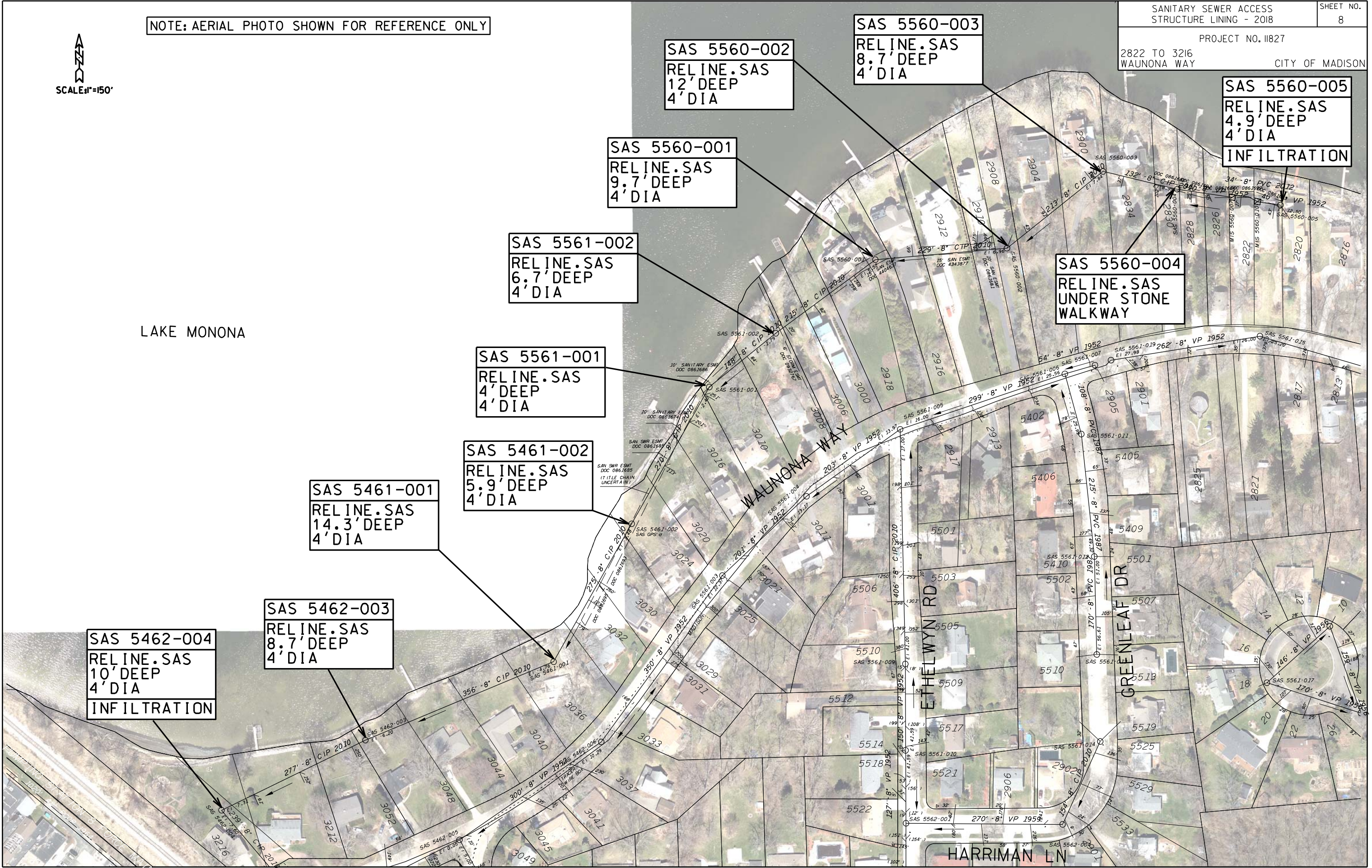
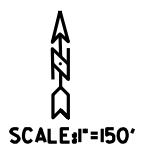
SAS 5660-006  
REL INE.SAS  
6.4' DEEP  
4' DIA

SAS 5660-005  
REL INE.SAS  
6.8' DEEP  
4' DIA



ORIGINATOR: CITY OF MADISON, STREETS DIVISION

NOTE: AERIAL PHOTO SHOWN FOR REFERENCE ONLY



SAS 5560-002  
RELINE .SAS  
12' DEEP  
4' DIA

SAS 5560-003  
RELINE .SAS  
8.7' DEEP  
4' DIA

SAS 5560-005  
RELINE .SAS  
4.9' DEEP  
4' DIA  
INFILTRATION

SAS 5560-001  
RELINE .SAS  
9.7' DEEP  
4' DIA

SAS 5561-002  
RELINE .SAS  
6.7' DEEP  
4' DIA

SAS 5560-004  
RELINE .SAS  
UNDER STONE  
WALKWAY

SAS 5561-001  
RELINE .SAS  
4' DEEP  
4' DIA

SAS 5461-002  
RELINE .SAS  
5.9' DEEP  
4' DIA

SAS 5461-001  
RELINE .SAS  
14.3' DEEP  
4' DIA

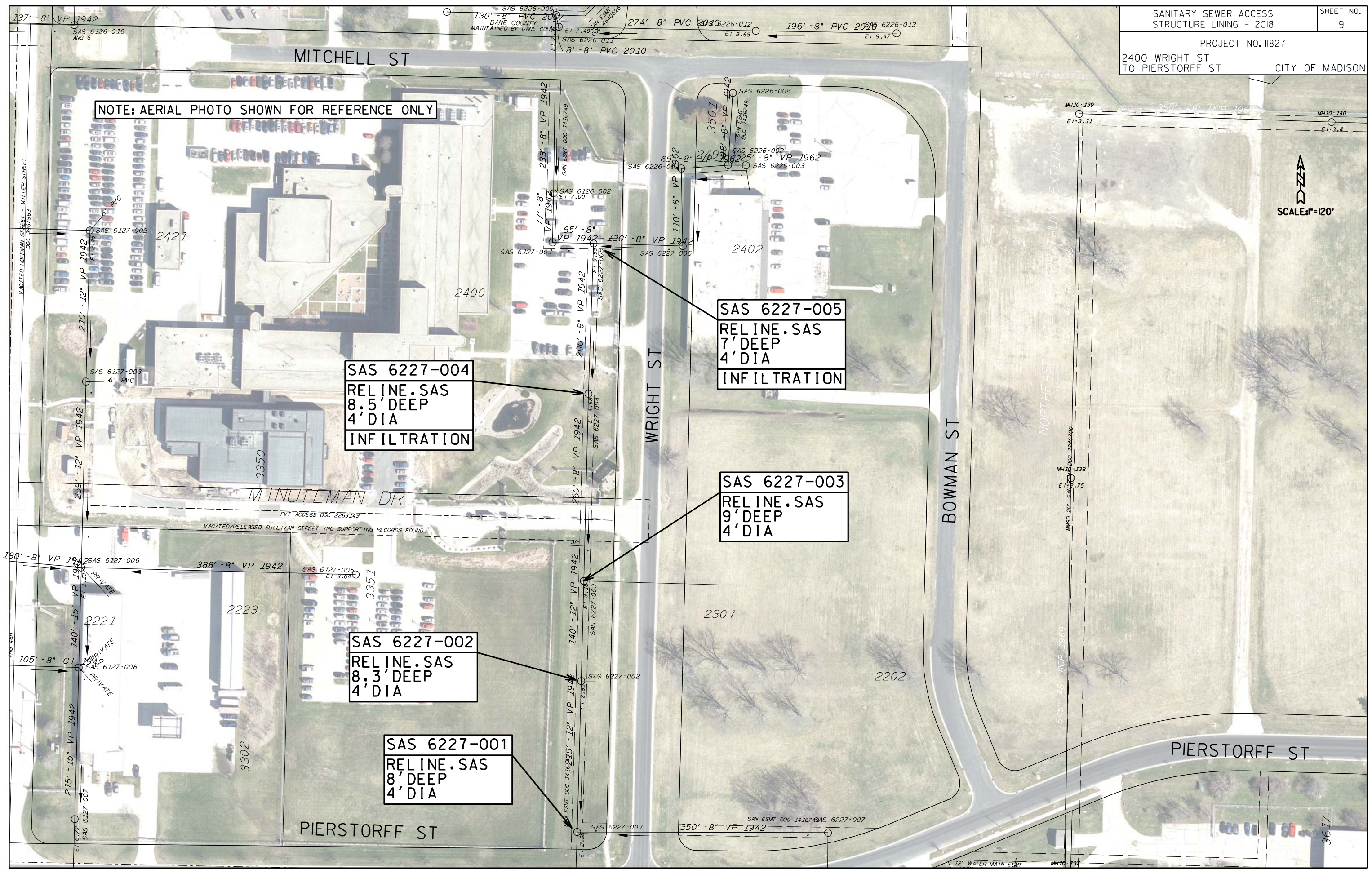
SAS 5462-003  
RELINE .SAS  
8.7' DEEP  
4' DIA

SAS 5462-004  
RELINE .SAS  
10' DEEP  
4' DIA  
INFILTRATION

ORIGINATOR: CITY OF MADISON, STREETS DIVISION



NOTE: AERIAL PHOTO SHOWN FOR REFERENCE ONLY



SAS 6227-004  
RELINE .SAS  
8.5' DEEP  
4' DIA  
INFILTRATION

SAS 6227-005  
RELINE .SAS  
7' DEEP  
4' DIA  
INFILTRATION

SAS 6227-003  
RELINE .SAS  
9' DEEP  
4' DIA

SAS 6227-002  
RELINE .SAS  
8.3' DEEP  
4' DIA

SAS 6227-001  
RELINE .SAS  
8' DEEP  
4' DIA

ORIGINATOR: CITY OF MADISON, STREETS DIVISION

NOTE: AERIAL PHOTO SHOWN FOR REFERENCE ONLY

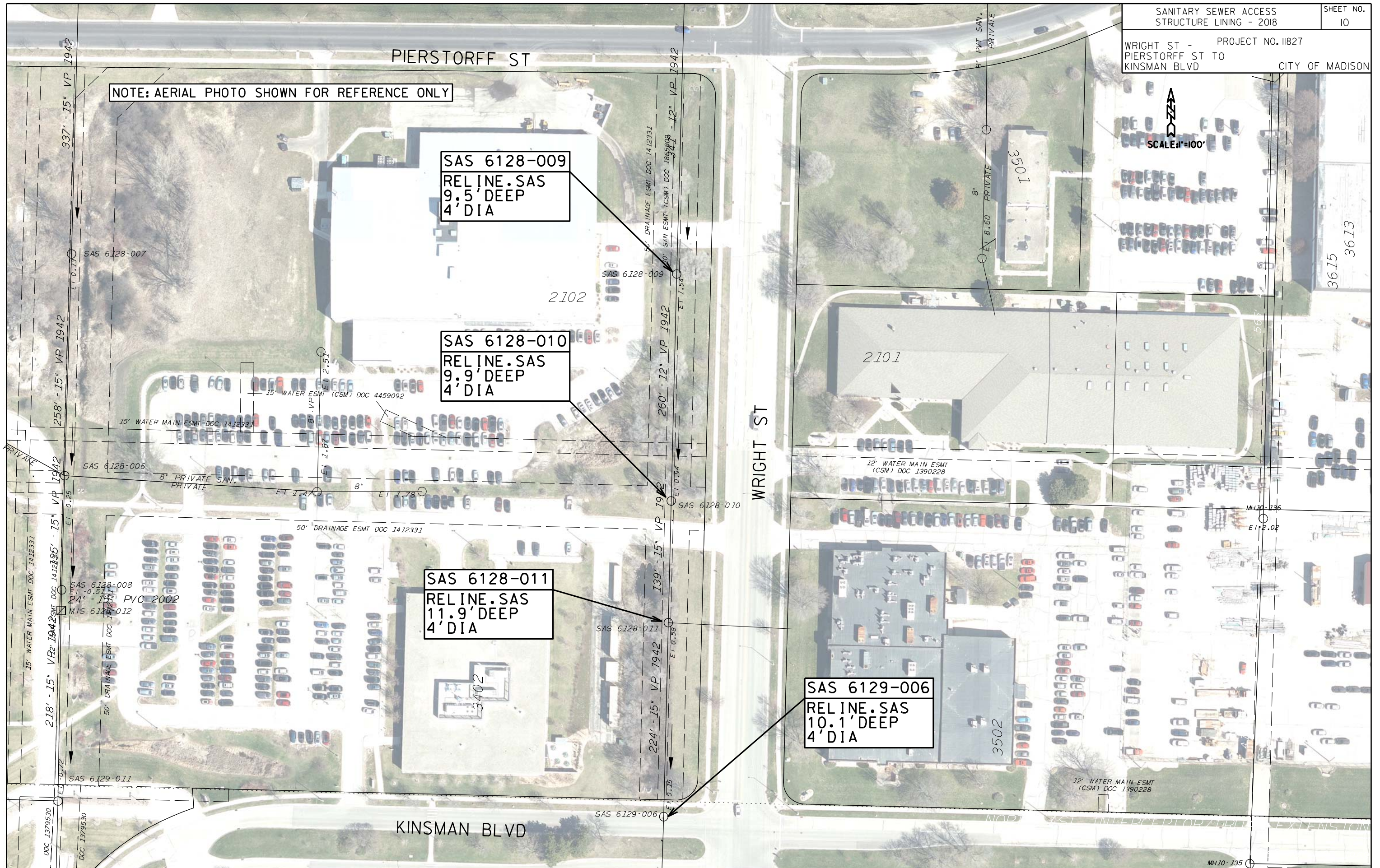


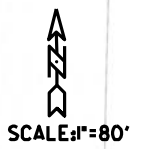
SAS 6128-009  
REL INE.SAS  
9.5' DEEP  
4' DIA

SAS 6128-010  
REL INE.SAS  
9.9' DEEP  
4' DIA

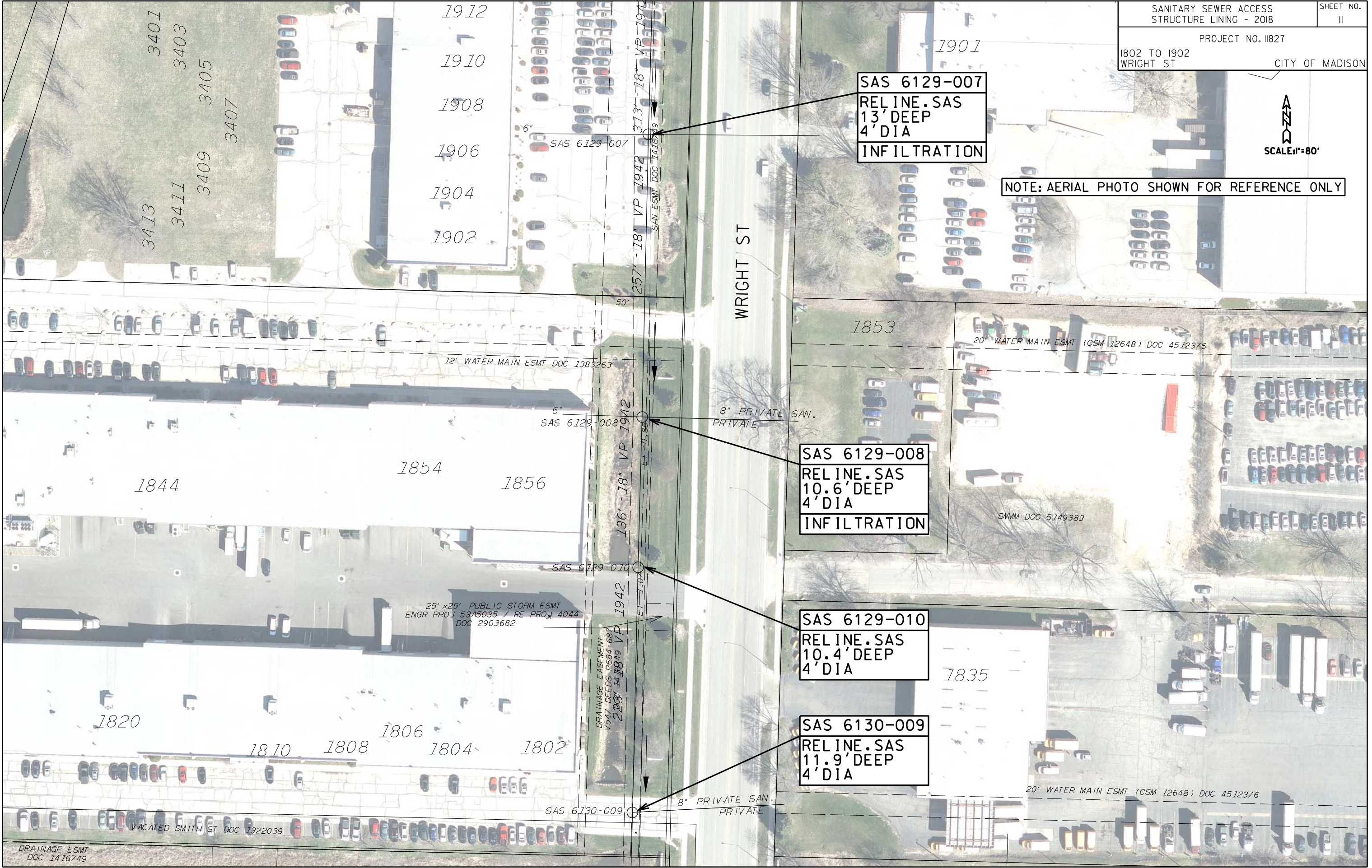
SAS 6128-011  
REL INE.SAS  
11.9' DEEP  
4' DIA

SAS 6129-006  
REL INE.SAS  
10.1' DEEP  
4' DIA





NOTE: AERIAL PHOTO SHOWN FOR REFERENCE ONLY



ORIGINATOR: CITY OF MADISON, STREETS DIVISION



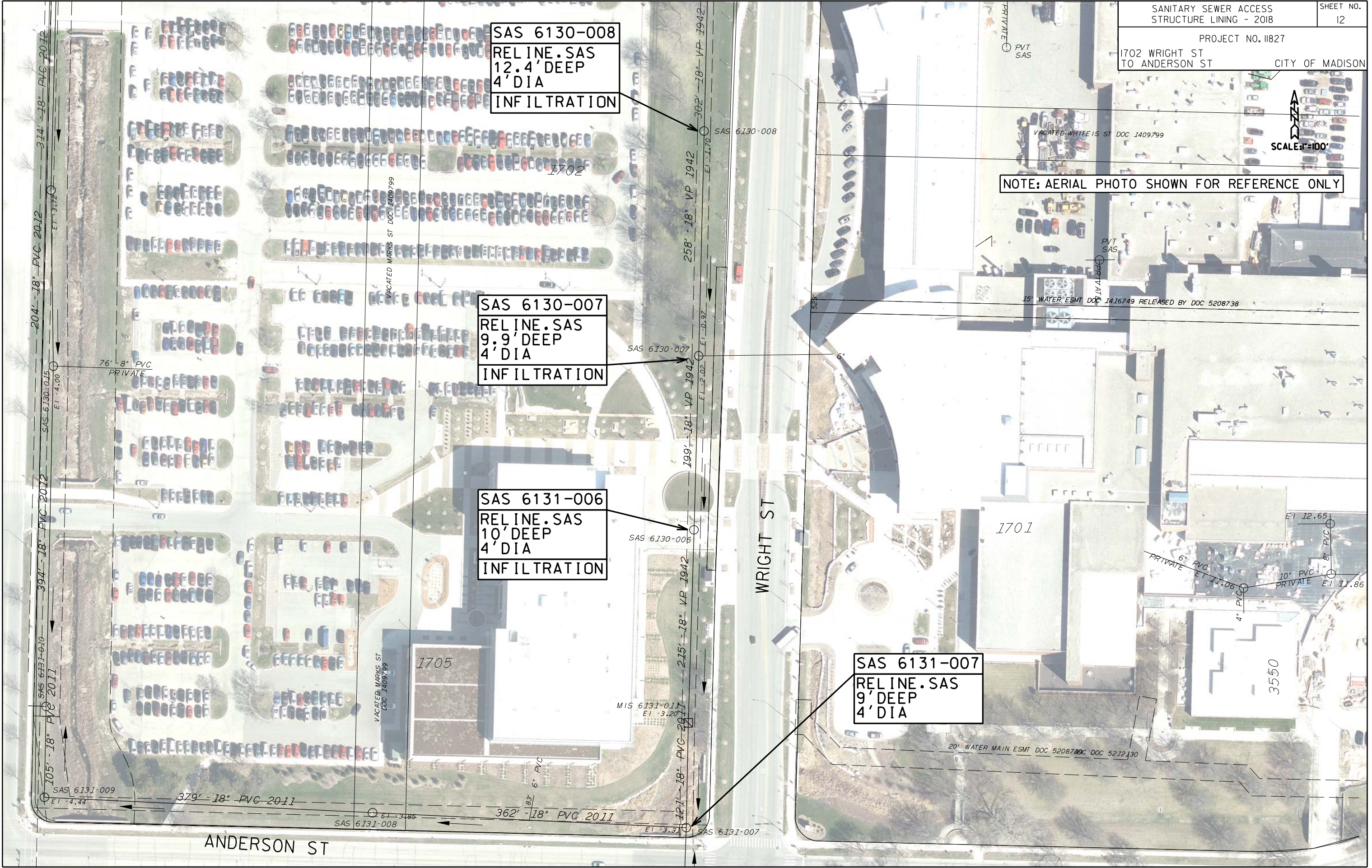
NOTE: AERIAL PHOTO SHOWN FOR REFERENCE ONLY

SAS 6130-008  
REL INE.SAS  
12.4' DEEP  
4' DIA  
INFILTRATION

SAS 6130-007  
REL INE.SAS  
9.9' DEEP  
4' DIA  
INFILTRATION

SAS 6131-006  
REL INE.SAS  
10' DEEP  
4' DIA  
INFILTRATION

SAS 6131-007  
REL INE.SAS  
9' DEEP  
4' DIA



NOTE: AERIAL PHOTO SHOWN FOR REFERENCE ONLY



SAS 5416-002  
RELINE .SAS  
15' DEEP  
4' DIA  
INFILTRATION



ORIGINATOR: CITY OF MADISON, STREETS DIVISION